



**DISCOVER
EDEN** A LEARNING
ADVENTURE

ITINERARY

discovereden.co.za

BIG 5 EXPERIENCE COURSE INFO

ABOUT THE BIG 5 EXPERIENCE

Discover Eden is an organisation which oversees meaningful educational tours in South Africa and provides an all-inclusive package for students. Food, accommodation and ground transport are all included in our packages.

Discover Eden was co-founded by Elton du Plooy and Dr Mark Brown to provide young conservation students with the opportunity to experience what a **career in conservation** can be like in a practical, hands-on way. Drawing on their extensive experience of doing ecological research and applied conservation work in southern Africa for several decades, Discover Eden has carefully developed courses that maximise opportunities for students to gain meaningful insight into conservation work in Africa. All of the activities we offer are included in the cost to help make it easy to budget for the trip with no unexpected costs.

Discover Eden will accompany you from airport pick-up to drop-off, offering guidance and support throughout your experience, making it as meaningful and rewarding as possible. Our personal service, the quality of the activities, the excellent accommodation we offer and the well-managed, meaningful structure of our programs will make this an experience you will never forget.

The Discover Eden Big 5 program is specifically designed for those who are either studying or working in the **ecological sciences, including zoology, botany, environmental science, animal science, or biological sciences**.

The program length is **3 weeks** and takes you out into the field to learn hands-on from some of the top conservation professionals in South Africa. Learn while having a great time touring our country.

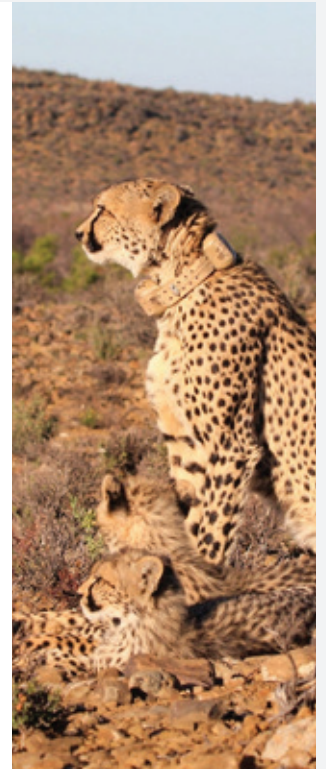
Please see the **itinerary document** for a breakdown of the trip. Please note due to the unpredictability of nature, the weather and the availability of the scientists, this itinerary may change without prior notice.

THE PROGRAM INCLUDES

GAME RESERVE MANAGEMENT & WILDLIFE CONSERVATION

You will spend 5 days on two game reserves, and 2 days in the world famous Kruger National Park. During your time on the reserves you will be accompanying and assisting game rangers as they fulfil their duties managing the conservation on the reserve. You could take part in tasks such as:

- The visual monitoring, research and tracking of animals,
- Radio Telemetry skills needed to track collared wildlife,
- Monitoring of species that are hard to spot with the use of camera traps,
- Bird identification and monitoring, including some bird ringing (banding),
- Monitoring animal behaviour,
- Habitat and vegetation identification and surveys,
- Erosion control,
- Alien invader plant removal and management,
- Emphasis on elephant and rhino conservation and research,
- Interact with habituated elephants rescued from certain death.



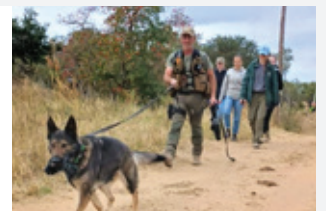
GAME CAPTURE TECHNIQUES

- Learn about various game capture techniques, including chemical immobilization, mass capture, aerial darting from a helicopter (chopper), and more.
- Practice darting from a chopper to see if you have what it takes to dart wildlife!



ANTI-POACHING EFFORTS

- Get to grips with the poaching threat to our wildlife
- Meet the dogs trained to act against poaching in protected areas.



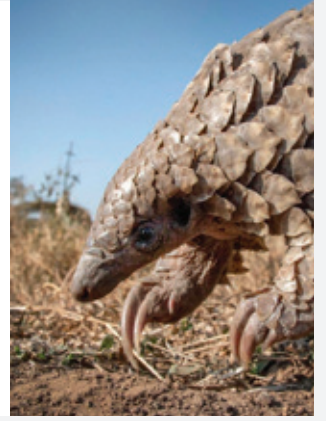
ORNITHOLOGY

- Visit a raptor project. Learn about the anatomy, behaviour and the research and conservation work the team is involved with.
- Complete a workshop on vulture poisoning training.
- Take part in a bird ringing (banding) exercise hosted by a professional bird ringer.



ANIMAL REHABILITATION

- Visit a top animal rehabilitation centre and a world-renowned wildlife hospital,
- Learn about the challenges and costs involved in getting injured, sick or orphaned animals back into the wild,
- Behind the scenes tour of the rearing unit, clinic and quarantine facilities,
- Learn about the world-wide issues facing pangolins, their illegal trade, and the efforts that go into saving them.



HERPETOLOGY

- Get to grips with the snake and other reptile species found in our region, and learn about their biology and how to safely handle and work with these special reptiles. Complete a snake handling course and receive a certification.



BOTANY

- Learn about natural vegetation and the management of it on a game reserve,
- Understand the threat of alien invader plants and why it is so important to monitor and control them. Assist in eradicating some aliens on the reserve.



ANIMAL BEHAVIOUR

- Learn about the ways animals interact with each other and their environment, and how our lives as humans can affect their ecology and behaviour.



ECOLOGY, BIODIVERSITY & SUSTAINABILITY

- These topics will be addressed throughout the entire program. At each activity, our guide will ensure you get the context of how to live more sustainably within our environment.



THE MANAGEMENT OF ENDANGERED SPECIES

- This topic will be addressed on many different occasions throughout the program by scientists and rangers in charge of their conservation.
- Participate in elephant and rhino research, learn about endangered vultures and other birds of prey.
- Examine the threats facing endangered pangolins.



WHATS INCLUDED

- Food: 3 meals a day
- Accommodation
- All ground transportation
- All the activities
- Lectures and course materials
- Park entry fees
- Travel advice prior to departure
- Transfers from and to OR Tambo International airport on arrival and departure (on set arrival and departure days only)
- Orientation on arrival
- Tea, coffee, juice and bottled water (where necessary)
- Support and assistance throughout your stay, 24/7
- A certificate upon completion

WHATS NOT INCLUDED

- Visa costs (If needed)
- Flight tickets
- Medical and Travel Insurance

ITEMS TO BRING ALONG

Please make sure you only bring one large suitcase and one piece of hand luggage. This is due to space restrictions in the minibus.

Essential items:

- Mosquito repellent
- Light cotton clothing
- Warm clothing for cold evenings and mornings
- Preferably some old clothing that can get ruined
- Hat/cap
- Sunscreen
- Swimming costume
- Comfortable walking shoes
- A few pairs of old long trousers for walking in the bushveld
- Waterproof jacket
- A small backpack
- Hiking shoes (preferably with high sides that cover ankles)
- Any special medication
- Swimming towel
- A refillable water bottle

OTHER

Washing machine:

- A washing machine is available at certain areas during your trip at your own cost (approximately R100 per wash). Washing powder will be supplied.

Wifi:

- Wi-Fi availability will be limited. It is recommended that you purchase your own local sim card at OR Tambo international airport if you require constant internet access.

Weather:

- It can get cold here in winter so you need to bring some warm clothes with you. In the mornings and at night it can be very cold (below 5 degrees celcius) but mostly during the day the temperature is mild to warm (18-26 degrees celcius).

HEALTH & SAFETY

- Discover Eden will have a guide with you from airport pick up to drop off.
- All travelling is done by the coordinators/guides that possess Professional Driving Permits.
- You will be required to sign an indemnity form on arrival.
- Hospitals and doctors are located in the nearest towns.
- Malaria: The tour takes place in a moderate-risk malaria region. Taking place in winter, there are not many mosquitoes around, so the risk is reduced. Feel free to consult your healthcare professional if you want to take precautions. The South African government recommends antimalarial drugs only from September to May.
- You should consult your doctor for advice on vaccinations you might need before travelling to South Africa.

REQUIREMENTS

- Full travel and medical insurance
- Basic English
- Good level of fitness

NON-ESSENTIAL ITEMS

- Camera
- Binoculars
- Sunglasses
- Spending money to buy gifts for friends or luxury items (chocolates, drinks), washing your clothes etc.

CURRENCY

ZAR (South African Rand). If you need to change your currency into Rands, please do it at OR Tambo airport as this is the only place you will be able to do it.

If you are going to also use your bank card while you are here then please remember to let your bank know that you will be using your card out of the country.

HOW TO APPLY

Complete the application form or contact the coordinator directly if you require any more information.

Elton du Plooy

contact@discovereden.co.za Mobile: +27 82 797 8907

PRICE PER PERSON

\$ 3 490 - US Dollar / **€ 3 200** - Euro

BOOK NOW

Please note: We use the US Dollar as our base currency as such the EUR price may change at any time due to exchange rate fluctuations.

PAYMENT

A 25% booking deposit is required to secure a place in the group.
Full payment needs to be made 2 months before arrival.

Bank details are on the invoice that's gets sent through after the applicant details form is submitted an a space confirmed.

